

# Traffic Improvements Near Tweed New Haven Airport

City of New Haven

Giovanni Zinn, PE

City Engineer

11/12/2024

# What we've heard

- Significant traffic on Ft. Hale Road related directly to the airport.
- Peak moments of two-way Ft. Hale Road traffic can be hard to get out of the driveway.
- Any backups at Arrivals and Departures areas at the airport spill into neighborhood.



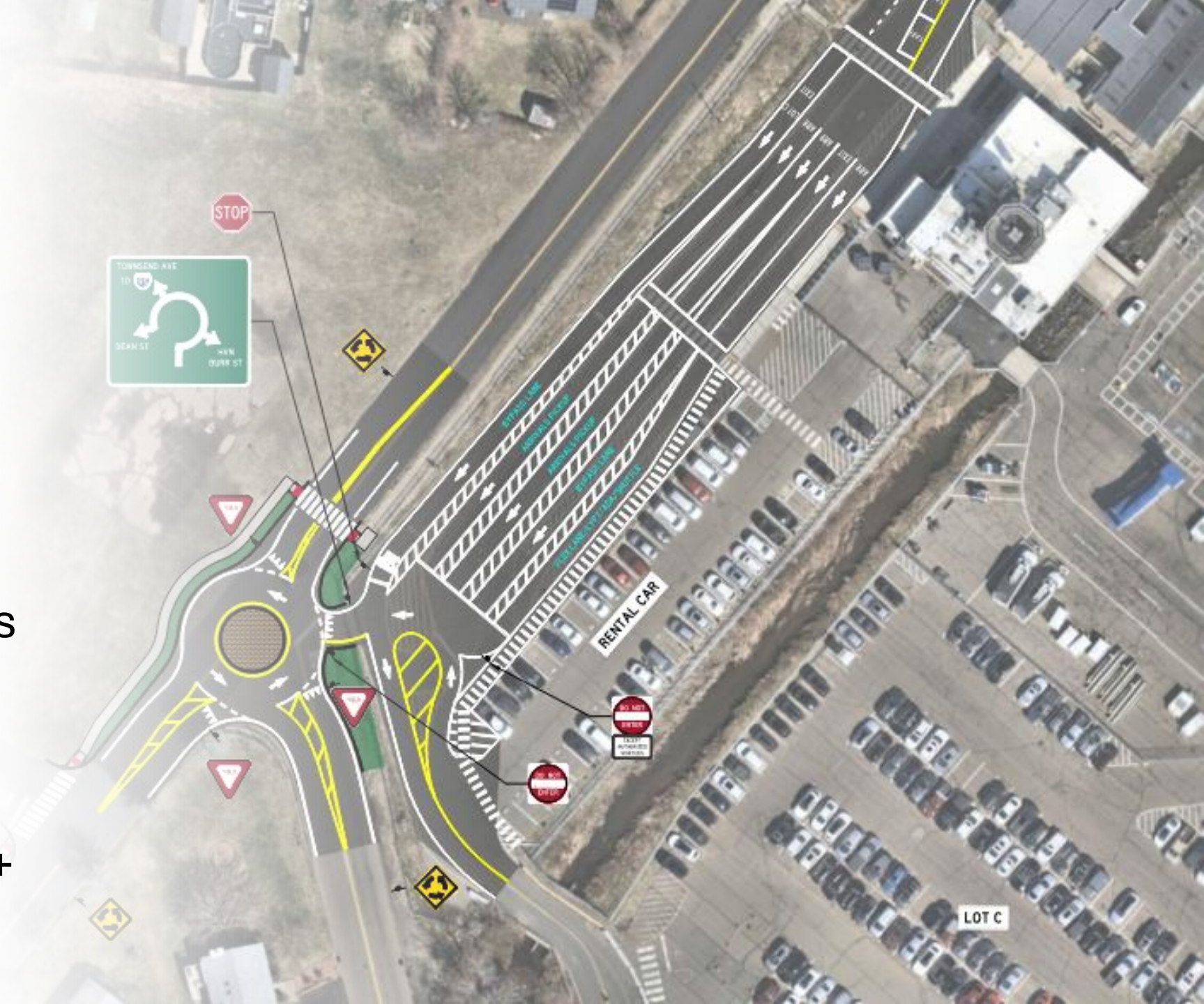
# Goals

- Decrease overall traffic volume on Ft. Hale Road
- Reduce the total miles traveled through neighborhood between Airport and Townsend Ave (CT Route 337)
- Improve pinch points internal to airport



# Proposed Improvements

- Open new exit (no entry) at the intersection of Dean St + Burr St
- Improve airport circulation by removing pinch points at Departures & Arrivals
- Improve intersection geometry at Dean St + Burr St



# Decrease Two-Way Traffic Through Neighborhood

Existing Conditions



## Key



Combined Departures/Arrivals/Lot C



Combined Arrivals/Lot C



Departures Only

Proposed Conditions



 -30% Traffic on Ft. Hale Road



# Reduce Total Miles Traveled on Local Streets

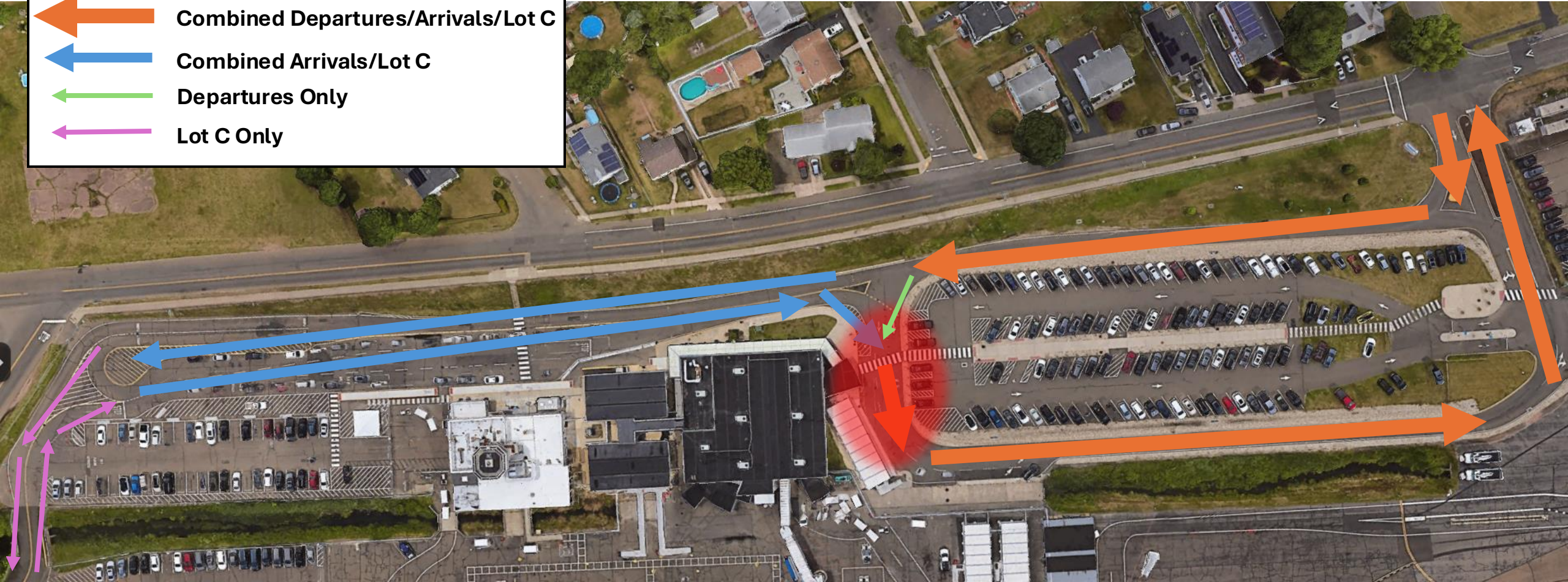


# Improve Airport Circulation

Existing Conditions

**Key**

- ← Combined Departures/Arrivals/Lot C
- ← Combined Arrivals/Lot C
- ← Departures Only
- ← Lot C Only

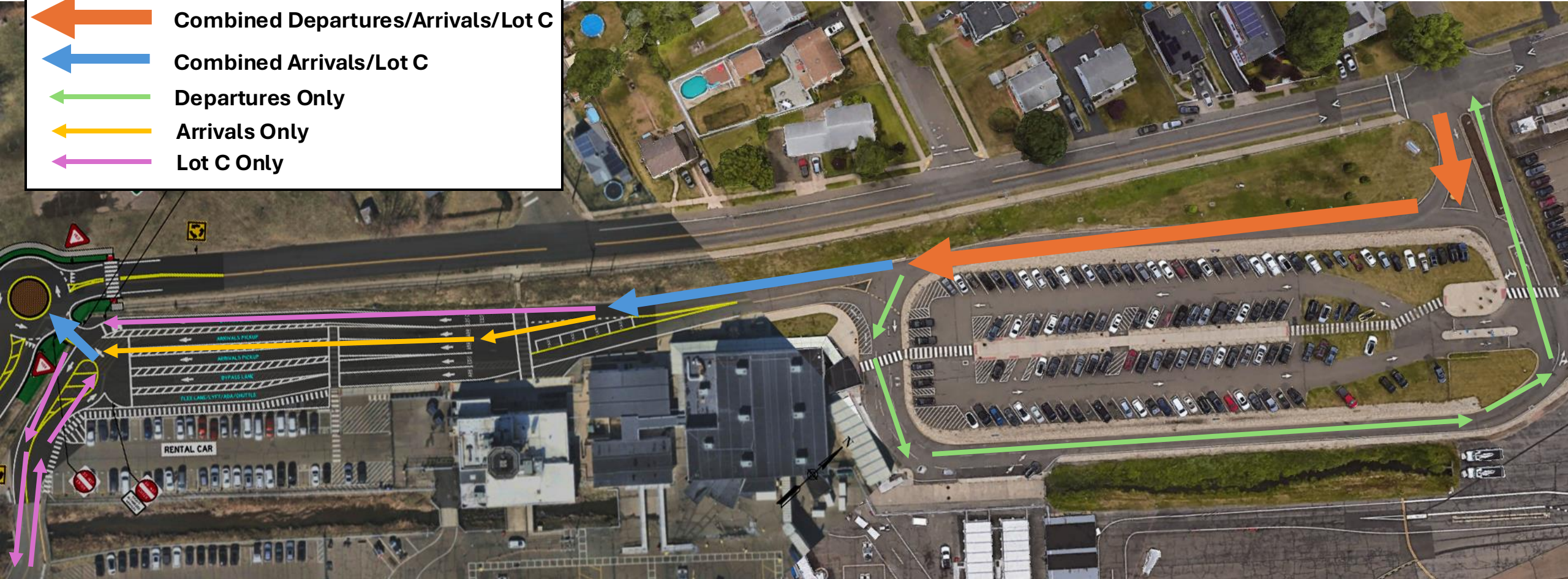


# Improve Airport Circulation

## Proposed Conditions

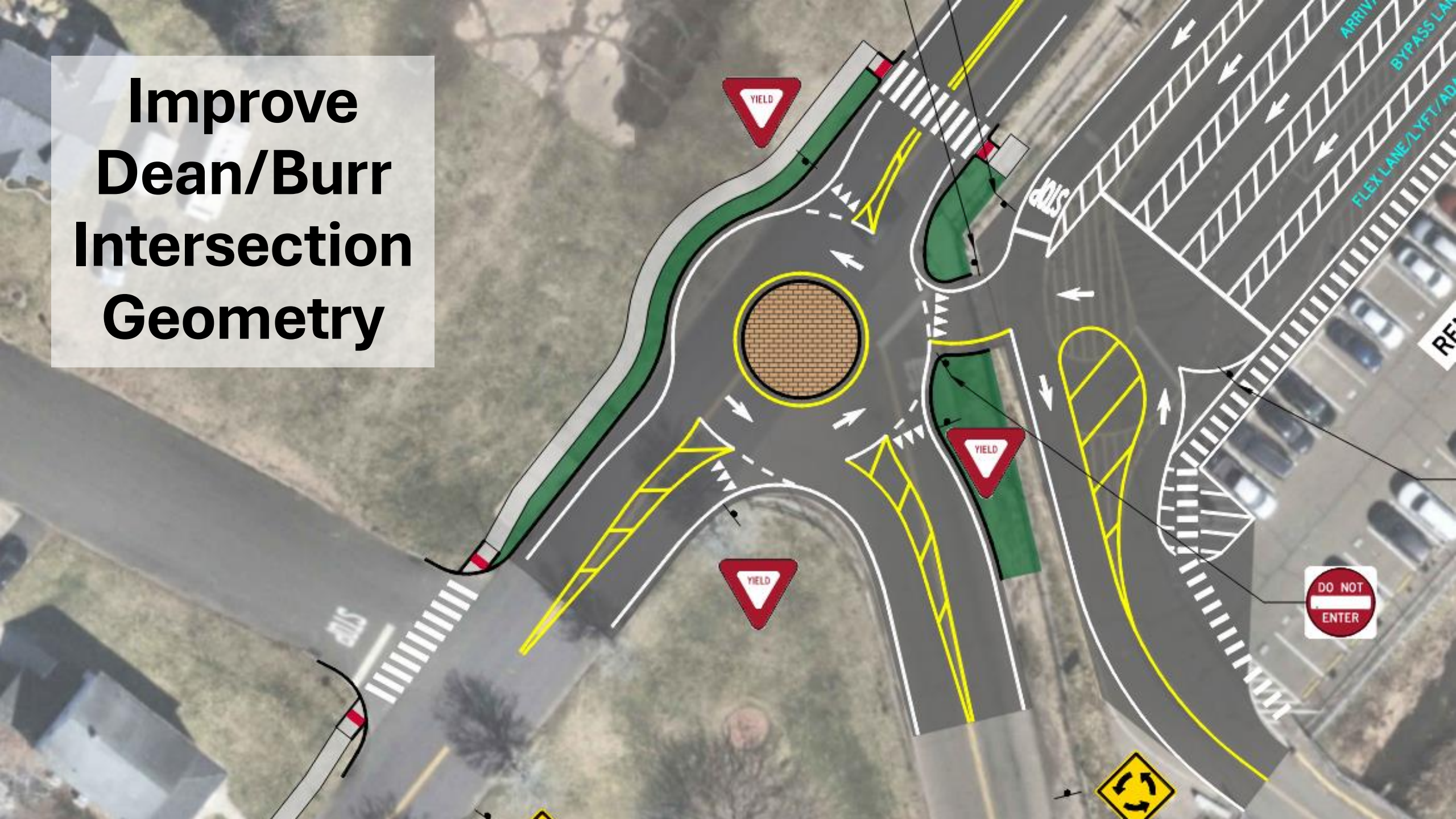
**Key**

- Combined Departures/Arrivals/Lot C
- Combined Arrivals/Lot C
- Departures Only
- Arrivals Only
- Lot C Only





# Improve Dean/Burr Intersection Geometry



# Potential Delivery Schedule

- Weather Dependent
- No later than Spring 2025, possibly Fall/Early Winter 2024

*Thank you to all neighbors who have shared their experiences and insights*

Contact: [gzinn@newhavenct.gov](mailto:gzinn@newhavenct.gov)

