

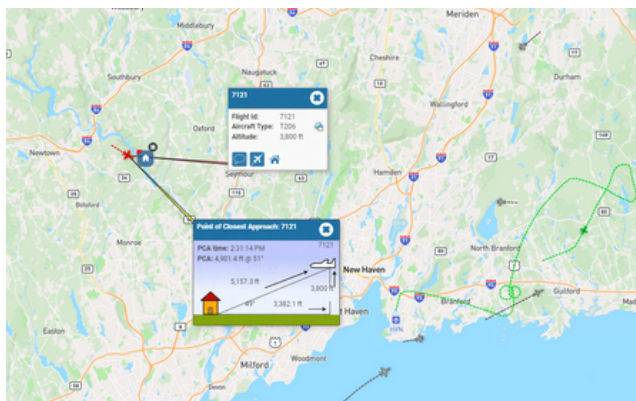
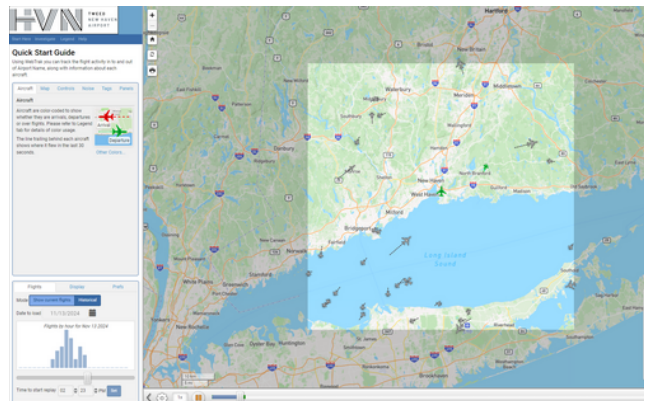
Guide to Using Envirosuite's WebTrak

Overview of WebTrak

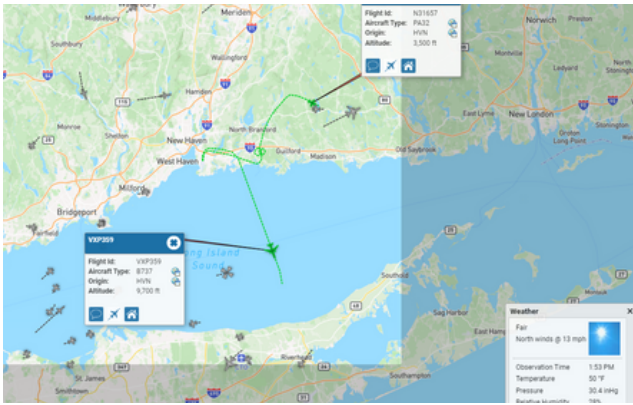
Envirosuite's WebTrak is a powerful, user-friendly platform that gives community members the ability to monitor and investigate aircraft activity and noise levels around their local airports. WebTrak provides a transparent view into real-time and historical flight paths, noise measurements, and environmental impacts, helping communities understand how airports manage noise and flight patterns to minimize disruptions.

Key Features of WebTrak

Visualizing Aircraft Locations,
Noise Levels, Aircraft
Proximity, and
Airport/Weather Updates

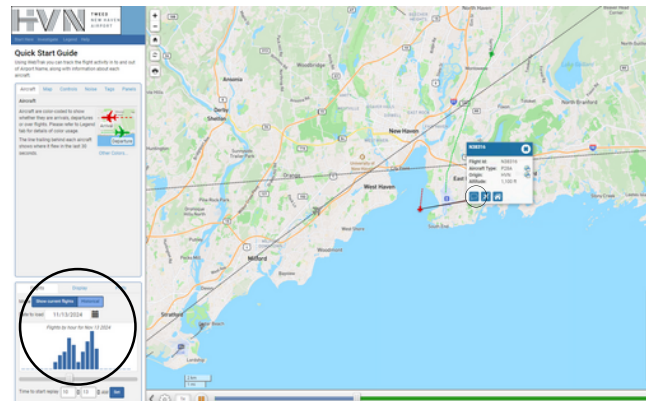


Investigating Specific Flight
Details and Point of Closest
Approach



Visualizing Aircraft and Flight Information

Research Past and Present Flights and Submit Inquiries or Complaints



Why Use WebTrak?

WebTrak enables users to independently verify information, see real-time environmental data, and gain a clear understanding of airport noise management practices.

For further support, visit www.flytweed.com

Contact & Offices

Tweed - New Haven Airport

155 Burr Street,
New Haven, CT 06512

Envirosuite

2330 East Bidwell, Suite 210
Folsom, CA 95630



Thomas Cavaliere
Director of Community
Engagement
tcavaliere@avports.com
(203) 430-2043



Greg Bracci
Vice President
Envirosuite